

rainbow

region

kids

OUTSIDE OF SCHOOL hours care

VACATION CLUB **ALSTONVILLE**

Monday 29 Sept

MEXICAN MONDAY

Enjoy outdoor international games, Mexican lunch and international music jam

*** Optional: Dress in Mexican colours/themes and bring along maracas or percussion! ***



Tuesday 30 Sept

EXCURSION **BYRON BAY** **Wildlife Sanctuary**



Wednesday 1 Oct

SUPER SPORTS DAY

Dress as your favourite athlete or dancer and enjoy our Sports Day!



Thursday 2 Oct

TEEPEE DAY

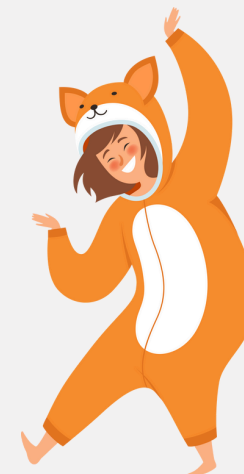


Build and decorate teepees with natural treasures, enjoy site nature walks, and take on a fun LEGO challenge indoors!

*** Optional: Bring old towels, sheets or clothes! ***

Friday 3 Oct

PYJAMA DAY



Wear your PJs for cookie decorating, movies, and fun Minute-to-Win-It games!

BOOKINGS & info

0429 640 075 (9am-3.30pm Mon-Fri)

rrkassist@nrcg.org.au

rainbow

region

kids

OUTSIDE OF SCHOOL hours care

VACATION CLUB **ALSTONVILLE**

Monday 6 Oct

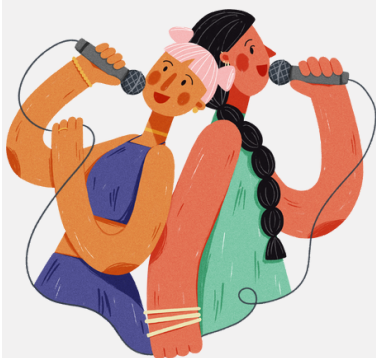
**We are
CLOSED**

Public holiday

Tuesday 7 Oct

**SONG AND
DANCE**

Karaoke, Just
Dance, Physical
Challenge Quests



*** Optional: Come
as your favorite
movie star, singer
or famous person

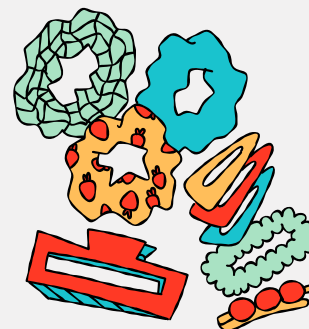
Wednesday 8 Oct

EXCURSION

**BALLINA
ROCK
CLIMBING**

Thursday 9 Oct

**CRAZY
HAIR AND
SCIENCE
DAY**

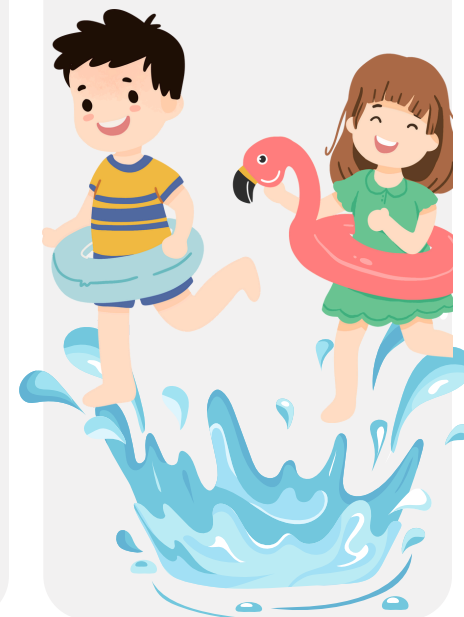


Join in a giant
papier-mâché
volcano group
project!

Friday 10 Oct

**WATER
PLAY**

***Bring towel and
change of clothes***



BOOKINGS & info

0429 640 075 (9am-3.30pm Mon-Fri)

rrkassist@nrcg.org.au

rainbow

region

kids

OUTSIDE OF SCHOOL hours care

VACATION CLUB ALSTONVILLE

Monday 13 Oct

**Celebrate the
last day with big
craft projects,
colourful
creations, and
fun hands-on
activities**



EXCURSION

**BALLINA
ROCK
CLIMBING**

Price

\$35

BUS INFO

Bus departs the school at 9am, you must be on site 30 minutes before that .
Bus departs Ballina at 12 pm.

**BYRON BAY
Wildlife
Sanctuary**



\$35

Bus departs the school at 9am, you must be on site 30 minutes before that . Bus departs Byron Bay at 13 pm.

opening hours 8am-6pm
Location 11 Perry Street - Old Pudding Factory
CONTACT number 0499 321 787

BOOKINGS & info

0429 640 075 (9am-3.30pm Mon-Fri)

rrkassist@nrcg.org.au

Rainbow

region

kids

OUTSIDE OF SCHOOL HOURS CARE

Terms and conditions

Our programs are based on the practices, principles, and outcomes of *My Time, Our Place*.

Spontaneous and self-initiated play is supported and encouraged throughout the day.

This program is subject to change at the discretion of the daily supervisor.

Excursion

On excursion day, please be at the service 30 minutes before the designated departure time. Excursions are compulsory, and our service is closed on those days.

Please ensure that your child:

- Brings a healthy packed lunch, snacks, a water bottle, hat, and spare clothes for the day. Remember that on cooking days, children will be making their own food to share.
- All our services have a no-hat, no-playing-outside policy that will be adhered to at all times.
- It is a workplace health and safety requirement that children wear covered shoes at our services for safe playing.
- Do not bring any electronic devices, including smartwatches, switches, tablets, or mobile phones to our services under any circumstances.

VACATION CLUB Terms and Conditions

We provide a wide range of fun and engaging activities for all children, and there is no need for your child to bring a device for their own entertainment. If you want to contact your child during the day, you are welcome to call or SMS our service number, and our staff will relay your messages.

Service locations and costs

For full details of our services, policies, locations, times, and fees, visit nrcg.org.au/rrk/

Excursion and workshops costs listed are additional to daily fees. Childcare subsidies apply to all excursion and workshops costs (based on family Centrelink entitlements and eligibility).

BOOKINGS & INFO

0429 640 075 (9am-3.30pm Mon-Fri)

rrkassist@nrcg.org.au